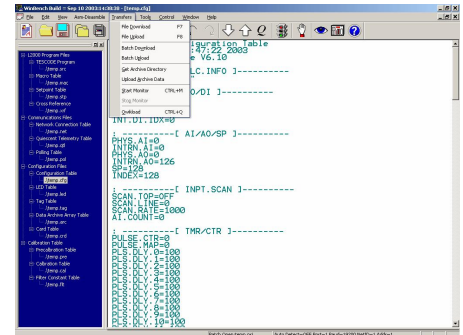


# L2000 Programmable Logic Controller

## WinBench Programming Software

### POWERFUL

WinBench™ is a Windows 95/NT/XP application that provides the complete programming environment for the L2000 native language - Tescode™. WinBench supports the transfer and modifications of all L2000 and LIQ 5 tables, allowing the user complete reign over the control program. WinBench supports Dialup connections and will simultaneously share communication ports with your SCADA software.



- Multi-threading/ Multi-tasking
- Native Windows 95/NT application utilizing the WIN32 API
- Pop-up menus and floating tool bars
- Transfer single tables or complete projects
- Transfer and display archive array data
- Change PLC modes, retrieve/set PLC real time clock
- Complete text editor, unlimited file size
- Context sensitive hints with on-line help system
- Operate over existing telemetry communication channels
- Share a communication port with your SCADA software
- Control of full hardware handshake signals for communications
- Up to 11 5k Baud, any communication port
- Hayes® Modem dialup capabilities
- Integrated phone book for dialup connections
- Quickload Upload / Download with calibration and setpoints

### USER-FRIENDLY

Designed around an intuitive, user-friendly interface, WinBench is very simple to use and handles all your programming needs. WinBench neatly packages the various tables associated with the L2000 and LIQ5 controllers into a project. WinBench then allows you to effortlessly manage these projects or, if you choose, you can work with the individual tables. Pop-Up menus make editing quick and simple. Need help? Simply move the mouse over whatever you need help with and WinBench will show you hints for that item. Additional help is available on-line and is context sensitive.

### Plug-in Tools

Plug-in tools available for WinBench include:

- Real time polling using dynamic data exchange
- SQL Client/Server Database Access
- Auto Dialer, Alarm Annunciation, Paging, and DTMF Control
- Communications Terminal Window
- Automated Documentation and Cross Reference Tools

Tesco Controls Inc.  
3409 52nd Ave.  
Sacramento, CA, 95823

Phone: 916-395-8800  
Fax: 916-429-2817

<http://www.tescocontrols.com>